

**THE  
ENGINE**

Built by MIT

**A home for Tough Tech founders.**

---

**Tough Tech** is transformative technology that takes the long view, solving the **world's important challenges** through the convergence of breakthrough science, engineering, and leadership.

Advanced  
Manufacturing



Energy



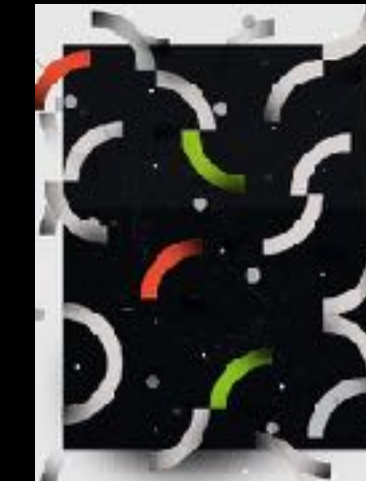
Advanced  
Materials



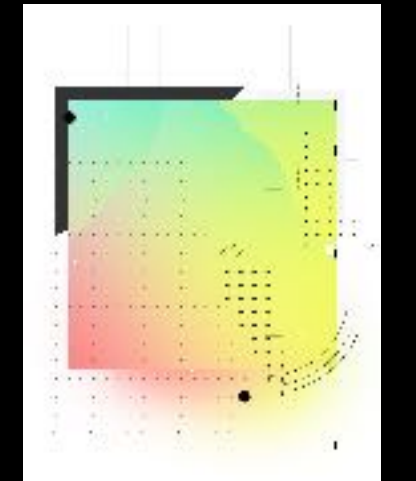
Quantum  
Computing



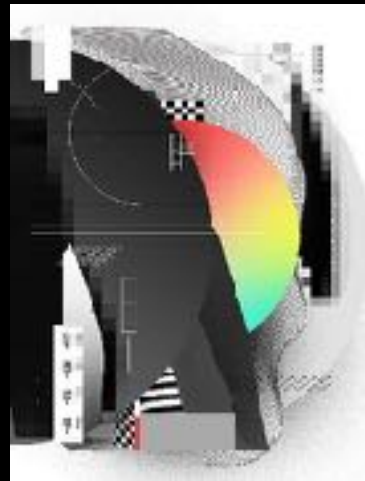
Semiconductors



Food  
& Agriculture



Deep  
Software



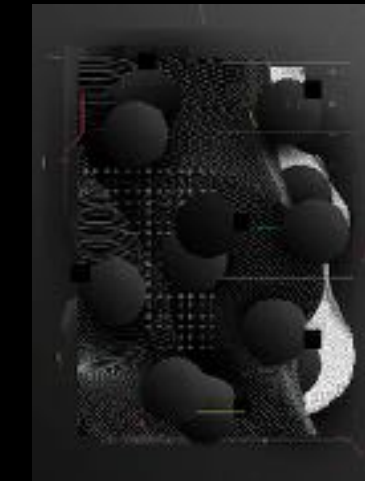
Internet of  
Things



BioTech & Life  
Sciences



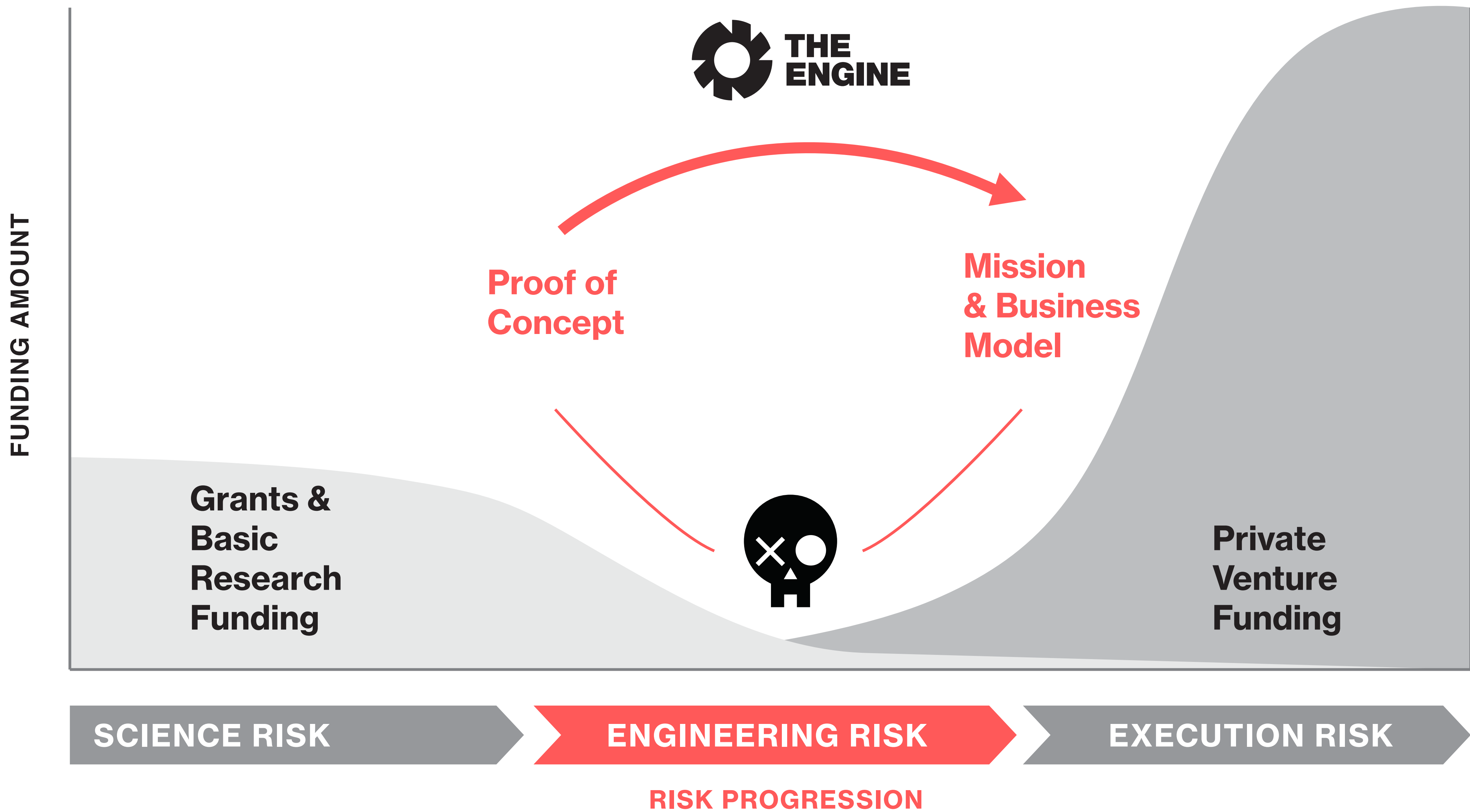
Robotics

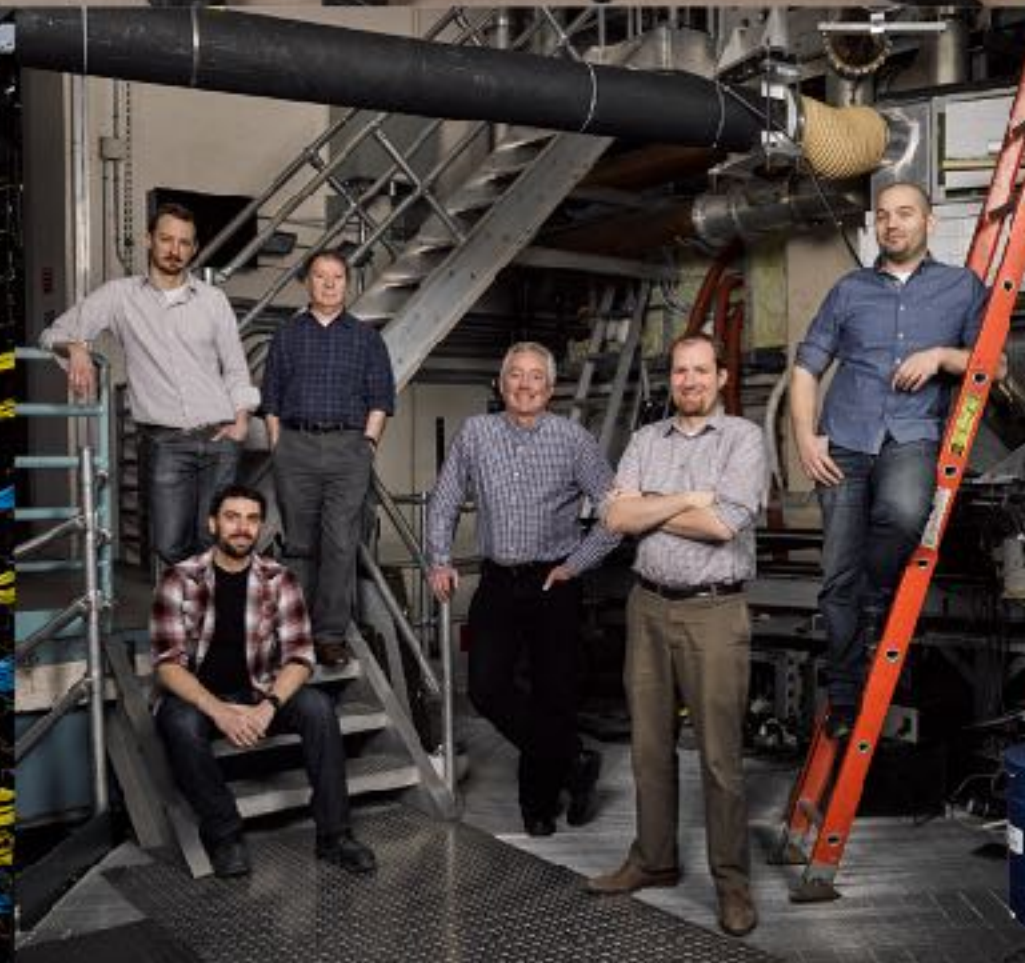
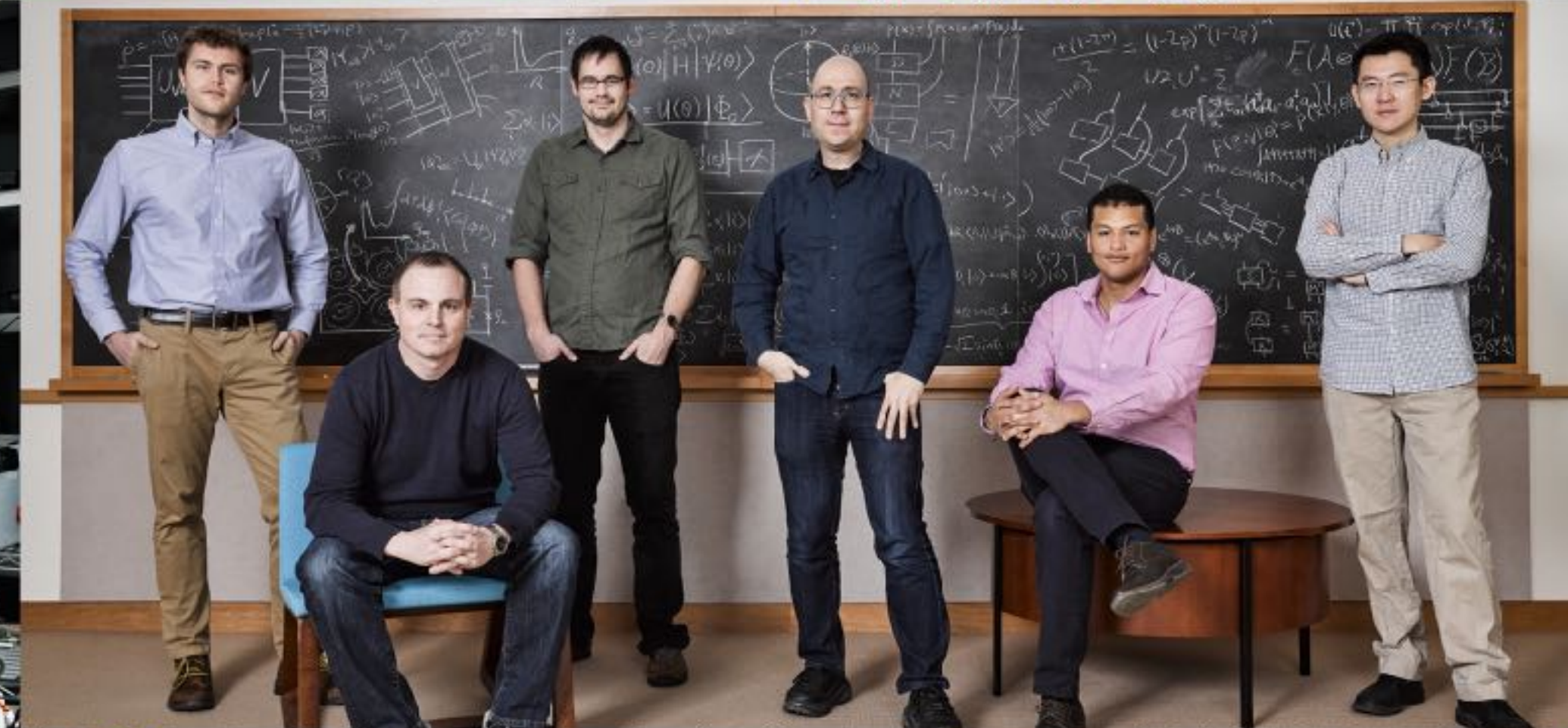
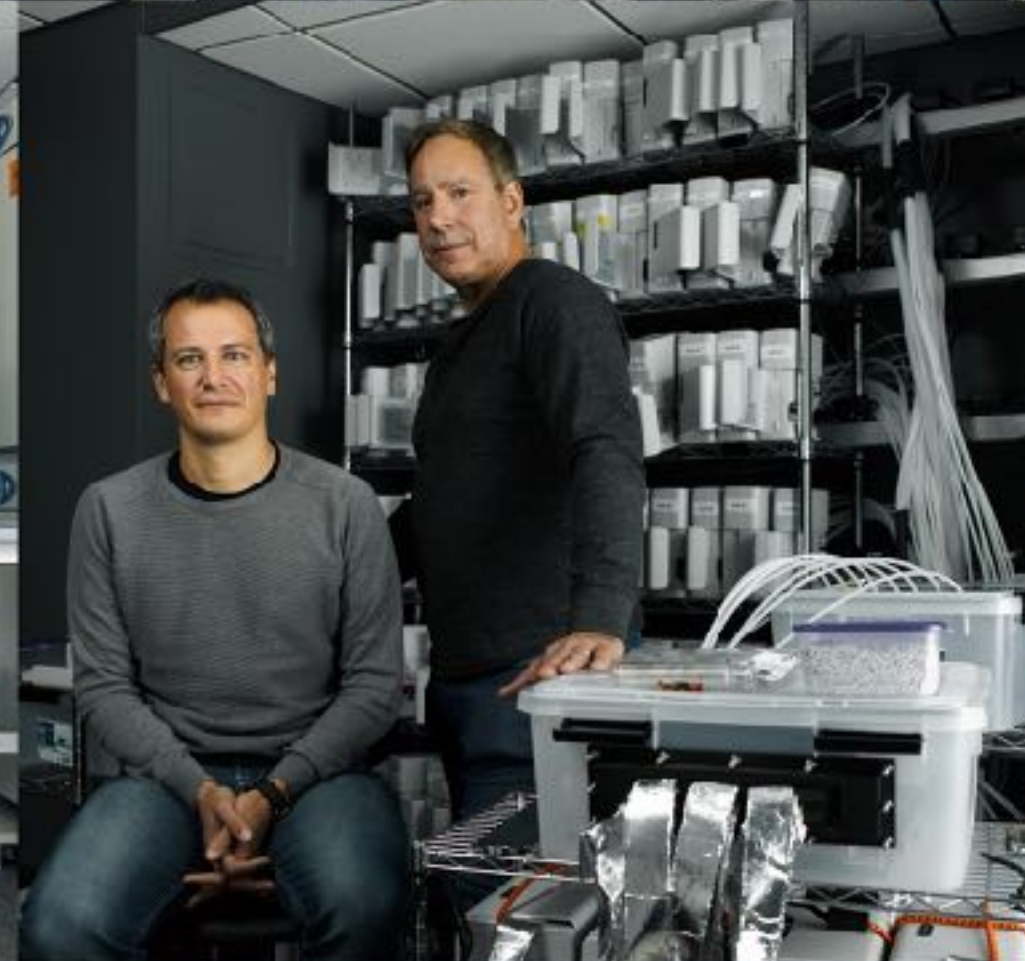
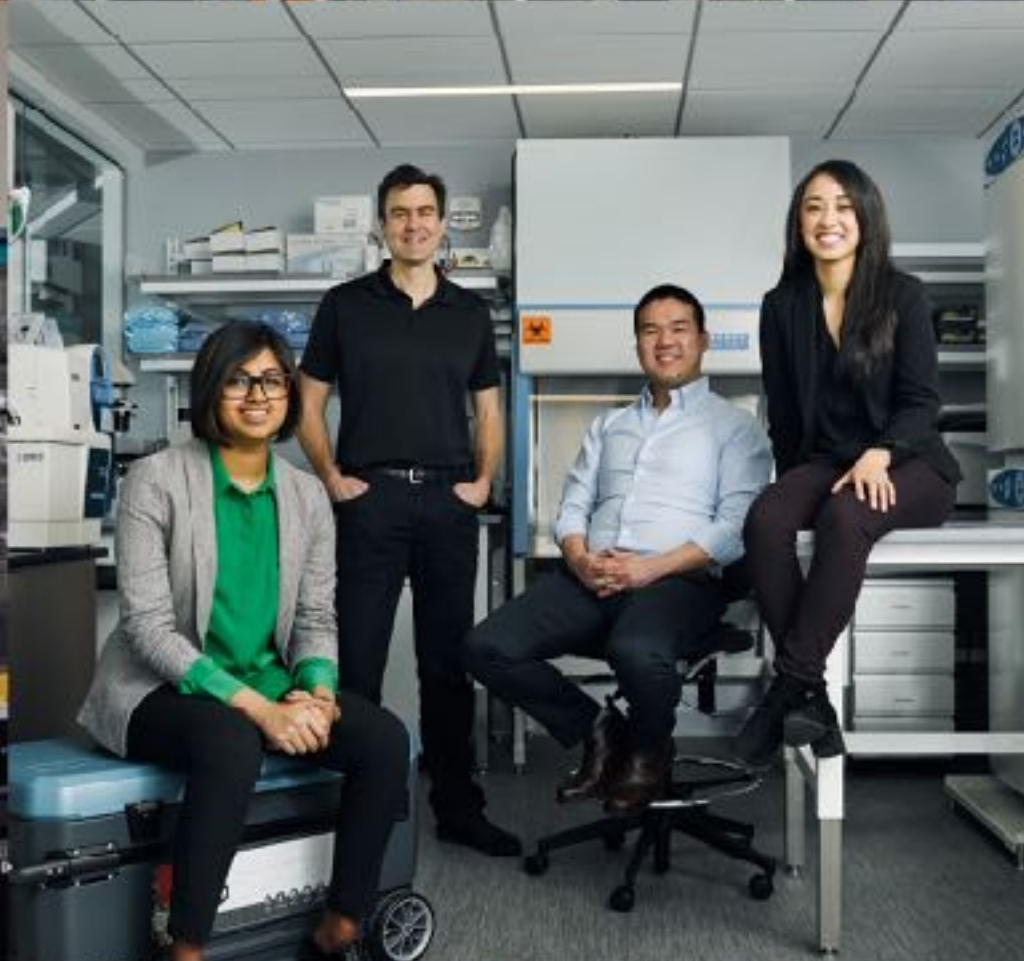
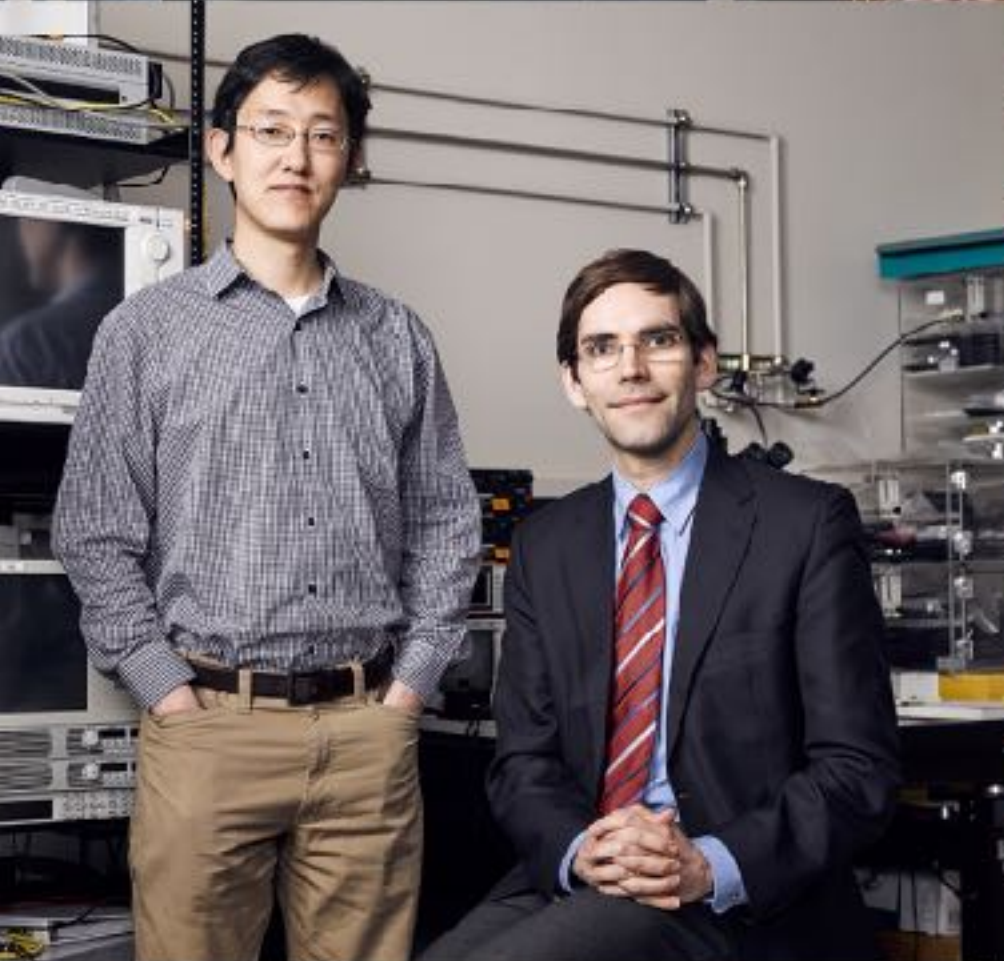
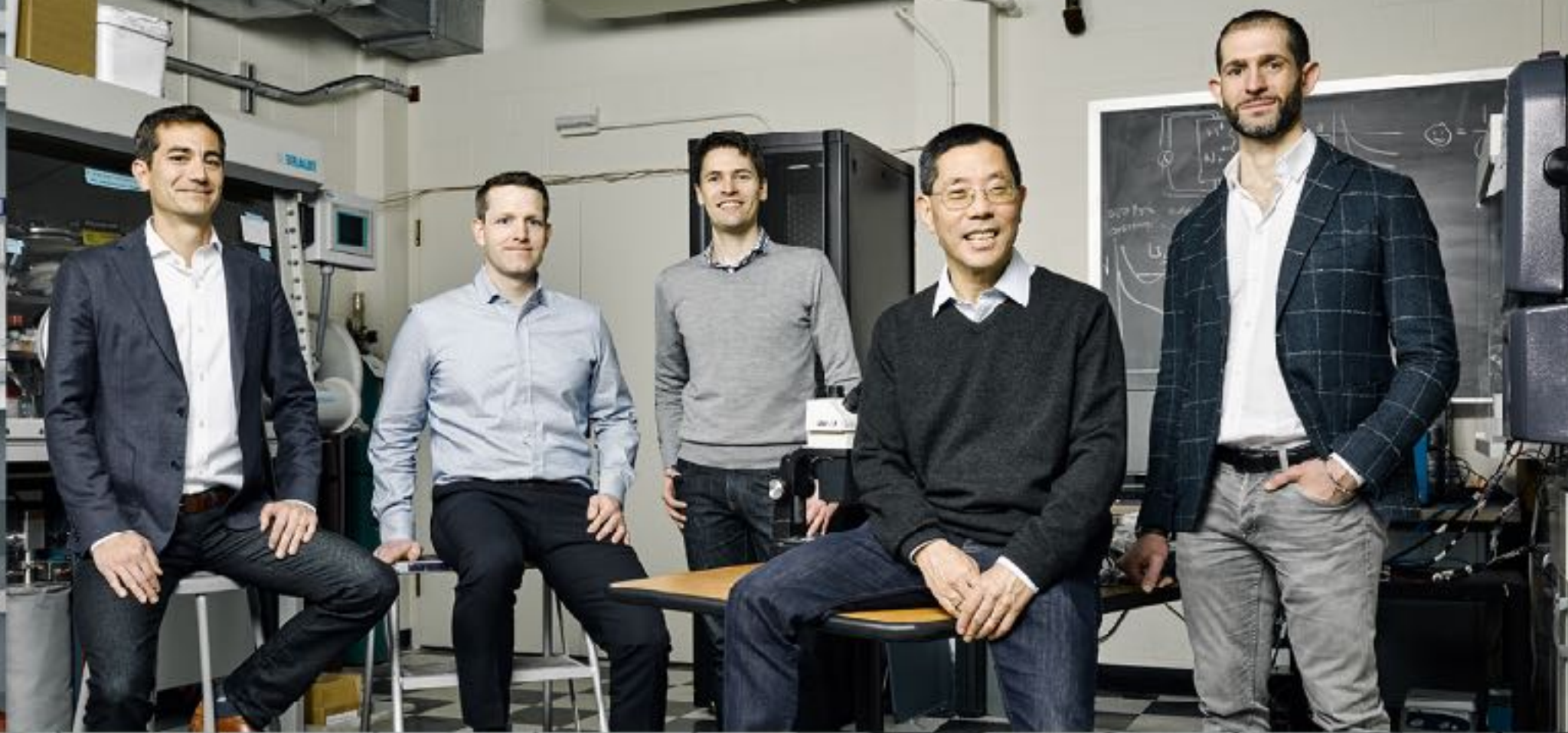


Space



...and the  
intersection of other new technology



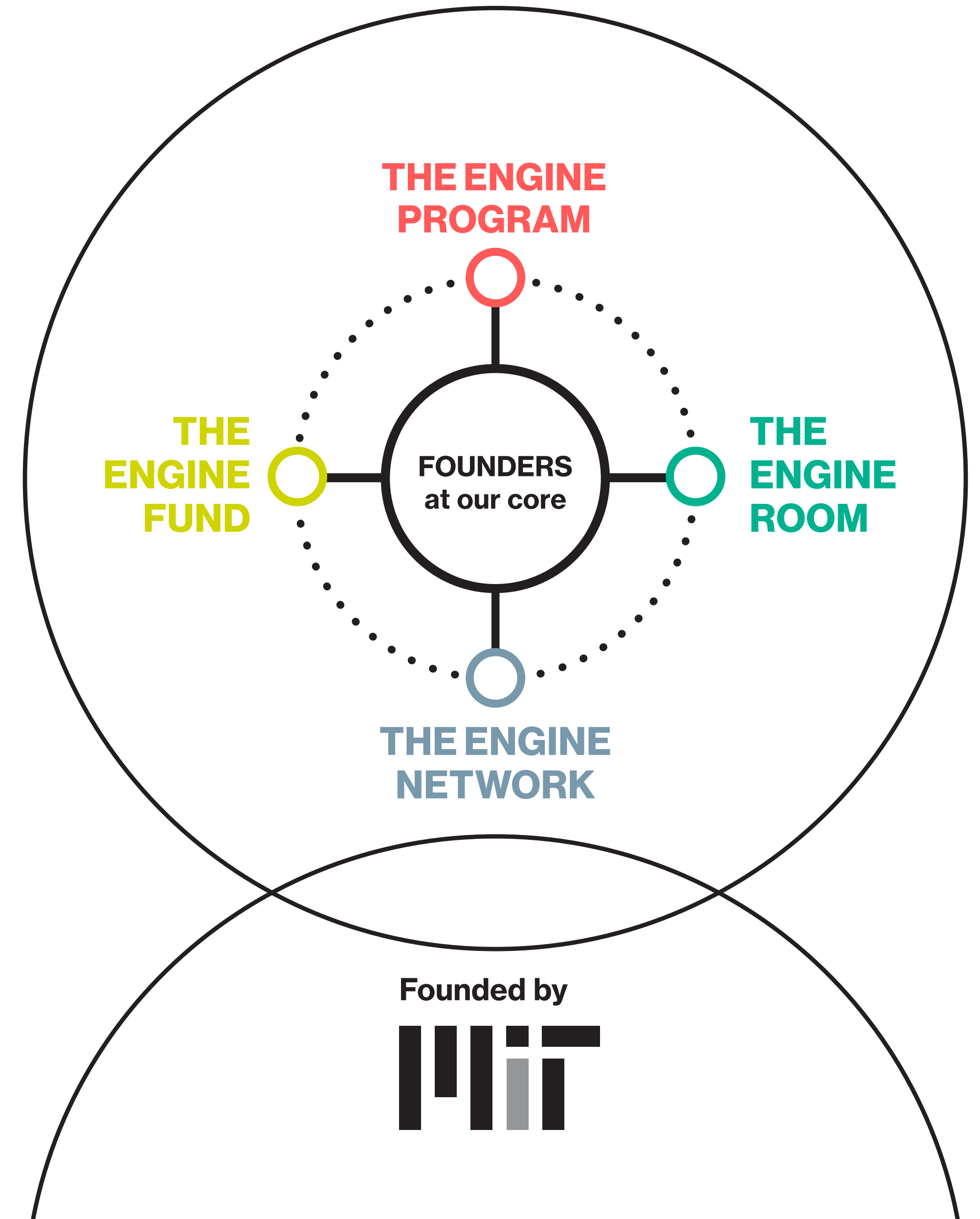


## The Engine System

---

**Built by MIT, The Engine bridges the gap between discovery and commercialization by empowering disruptive technologies with the long-term capital, knowledge, and the specialized equipment and labs they need to thrive.**

**The Engine Fund, The Engine Network, The Engine Room, The Engine Programs – they all exist to support Tough Tech founders.**





# Via Separations

Massive energy savings from tiny pores.

---

**Founders** |1| Shreya Dave, |2| Brent Keller, |3| Jeff Grossman

---

**Background** Department of Materials Science and Engineering, Grossman Lab at MIT

---

**Industry** Materials / Energy

---

**The Business** Separation processes are the building blocks for materials, chemicals, and consumer goods – they are core to the industrial ecosystem. Currently, separations are done with thermal processes such as evaporation and distillation. Via Separations is commercializing novel membrane materials and manufacturing processes to replace evaporation and distillation with filtration.

**The Impact** Via Separations' technology has the potential to replace thermal separation, saving the energy equivalent used by the entire gasoline industry every year in the U.S.



# ISEE

Humanistic artificial intelligence.

---

**Founders** |1| Yibiao Zhao, |2| Debbie Yu, |3| Chris Baker

---

**Background** MIT Computational Cognitive Science Group

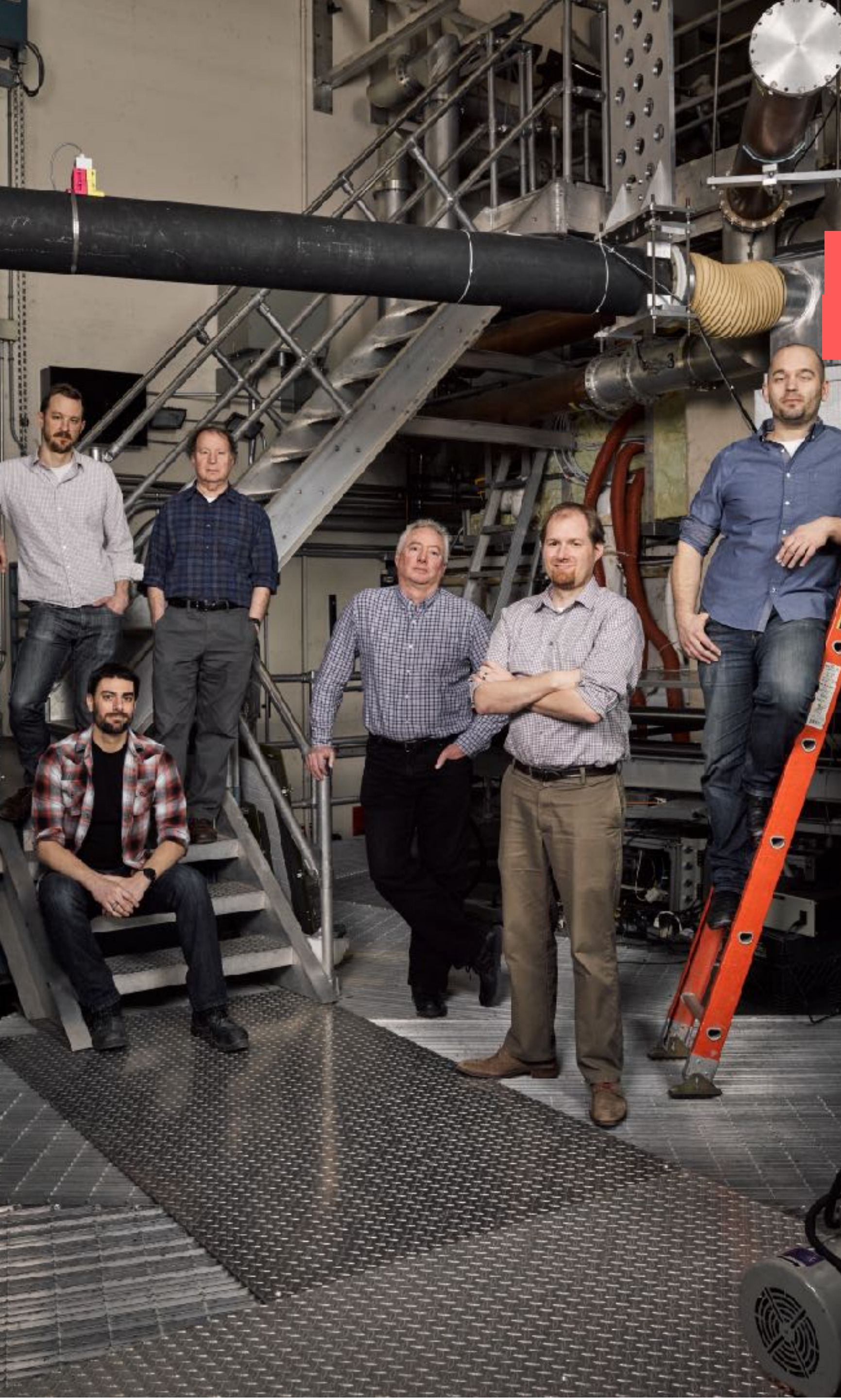
---

**Industry** AI / Autonomous Vehicles

---

**The Business** ISEE is engineering next-generation, humanistic AI for autonomous vehicles. Their cognitive core can reason through an uncertain future without sole reliance on hand-coded rules or rote pattern recognition. ISEE uses predictive modeling, theory of mind, and probabilistic reasoning to create the cognitive core.

**The Impact** Built on a cognitive core, ISEE's technology will usher in a world of safe autonomous vehicles, operating without accident and without the need for human intervention.



# Commonwealth Fusion Systems

The fastest path to clean, limitless fusion energy.

---

**Founders** |1| Bob Mumgaard |2| Brandon Sorbom, |3| Dan Brunner, |4| Dennis Whyte, |5| Martin Greenwald, |6| Zach Hartwig

---

**Background** Plasma Science and Fusion Center at MIT

---

**Industry** Fusion Energy

---

**The Business** Commonwealth Fusion Systems (CFS) aims to provide a new path to fusion power by combining proven fusion physics with revolutionary magnet technology to deploy the first working, economic fusion reactors to the world. The team will develop superconducting magnets based on a new class of high temperature superconductor materials that allow fusion reactors to be 10 times smaller, economically feasible, and operational in the next 10 years.

**The Impact** Fusion energy is the holy grail of clean energy: limitless, no greenhouse gases, baseload, concentrated, no meltdown, and no proliferation. If successful, the world's energy systems will be transformed.



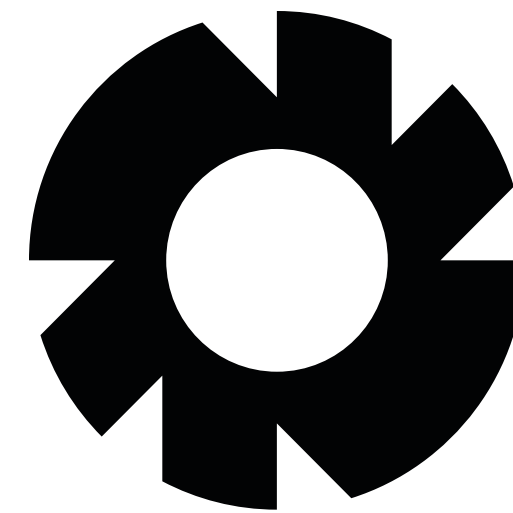
# THE ENGINE NETWORK

A symbiotic community of Tough Tech startups and strategic corporate members who are driven to build a Tough Tech movement through invention, strategy and execution.

## Tough Tech Founders

A group of like-minded founders and startups

37 TOUGH TECH COMPANIES



The Engine as Convener

Building strong relationships for the future

## Strategic Corporates

Give advice and support through market, product and technology insights



Equity investment

Joint Development Agreements

Licensing

Mergers & Acquisitions

Other agreements

# The Engine Team

---



**Katie Rae**  
*CEO &  
Managing Partner*



**Reed Sturtevant**  
*General Partner*



**Ann DeWitt**  
*COO &  
General Partner*



**Bettina Metais**  
*VP Investor Relations  
& Operations*



**Ally Yost**  
*Senior Associate*



**Eugene Wan**  
*Associate*



**Geraldine Paulus**  
*Associate*



**Fran Barros**  
*Chief Design Officer*



**Paula Anzer**  
*Head of Network*



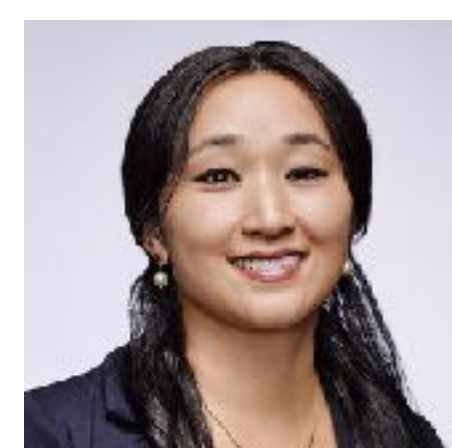
**Emily Knight**  
*Head of Operations*



**Nathaniel Brewster**  
*Director of Content*



**Alana Olsen**  
*Operations Manager*



**Julie Androlio**  
*Finance*



**Casra Salehomoum**  
*Community Operations  
Associate*



**Kara L'Italien**  
*Community Operations  
Associate*



**Alex Allen**  
*Labs Operations  
Manager*



**Cesar Guerrero**  
*Labs Operations*



**Rachel Wallace**  
*Katie EA*

**Thanks!**

