

# **THE ENGINE**

Built by MIT

**Anantha P. Chandrakasan**  
**Vannevar Bush Professor of EECS**  
**Department Head, MIT EECS**

May 3, 2017

## The Washington Post

### Opinions

By L. Rafael Reif May 22 (online)

*L. Rafael Reif is president of MIT.*

In 2012, MIT researchers introduced a liquid-impregnated surface that made the inside of a bottle so slippery that ketchup would flow out freely to the last drop.

Today, [LiquiGlide](#), the company spun out from this advance, has 30 industrial customers and has received thousands of inquiries from businesses that see new ways to use the technology, from IV blood bags to oil pipelines. The company, in which MIT has an equity stake, secured significant first-round [venture funding](#) this spring. . . .

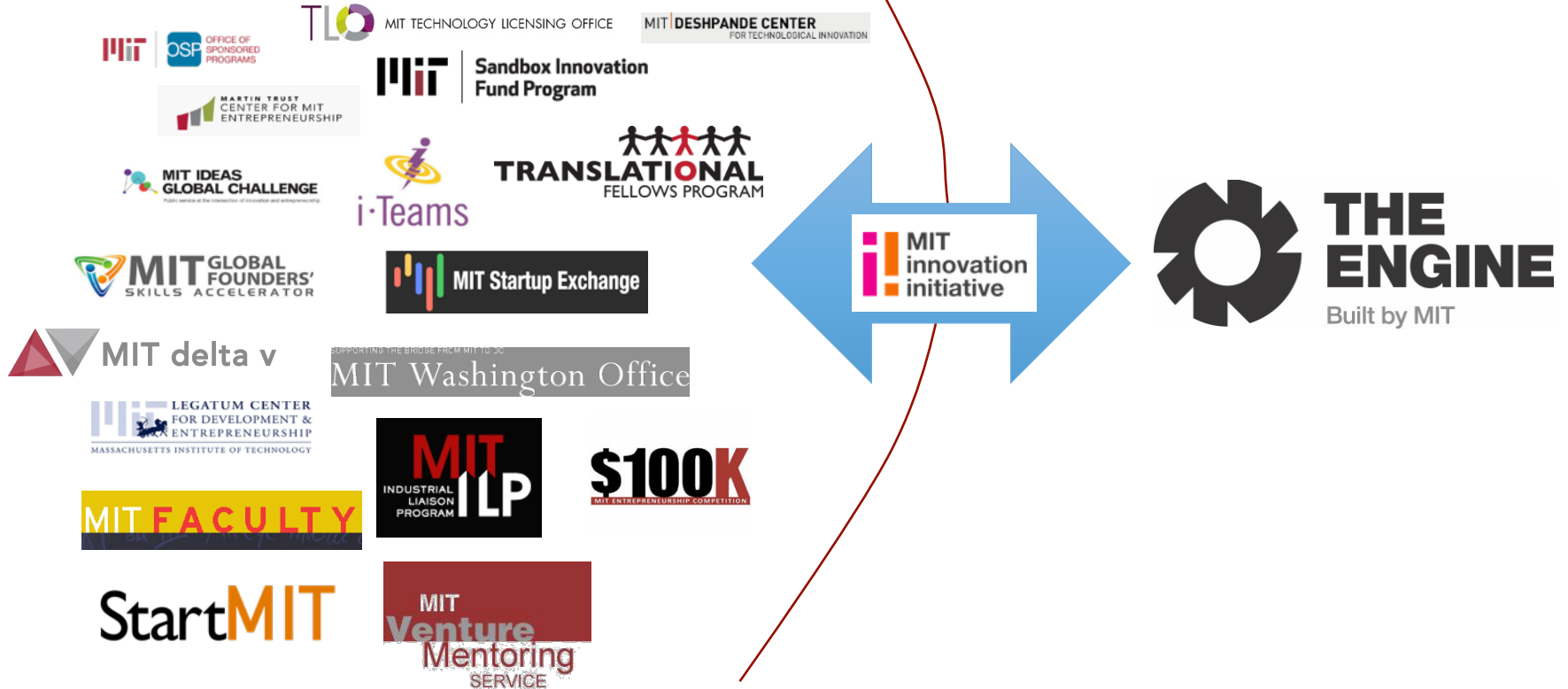


**Problem:** Existing innovation pipeline system *not structured to support complex, slower-growing concepts* that could have huge long-term impact.

### Opportunity to develop “innovation orchards”:

- Lost potential: Big ideas not making it to market
- Patient support: Capital and infrastructure
- Access: Specialized equipment and expertise

# Leveraging MIT Efforts

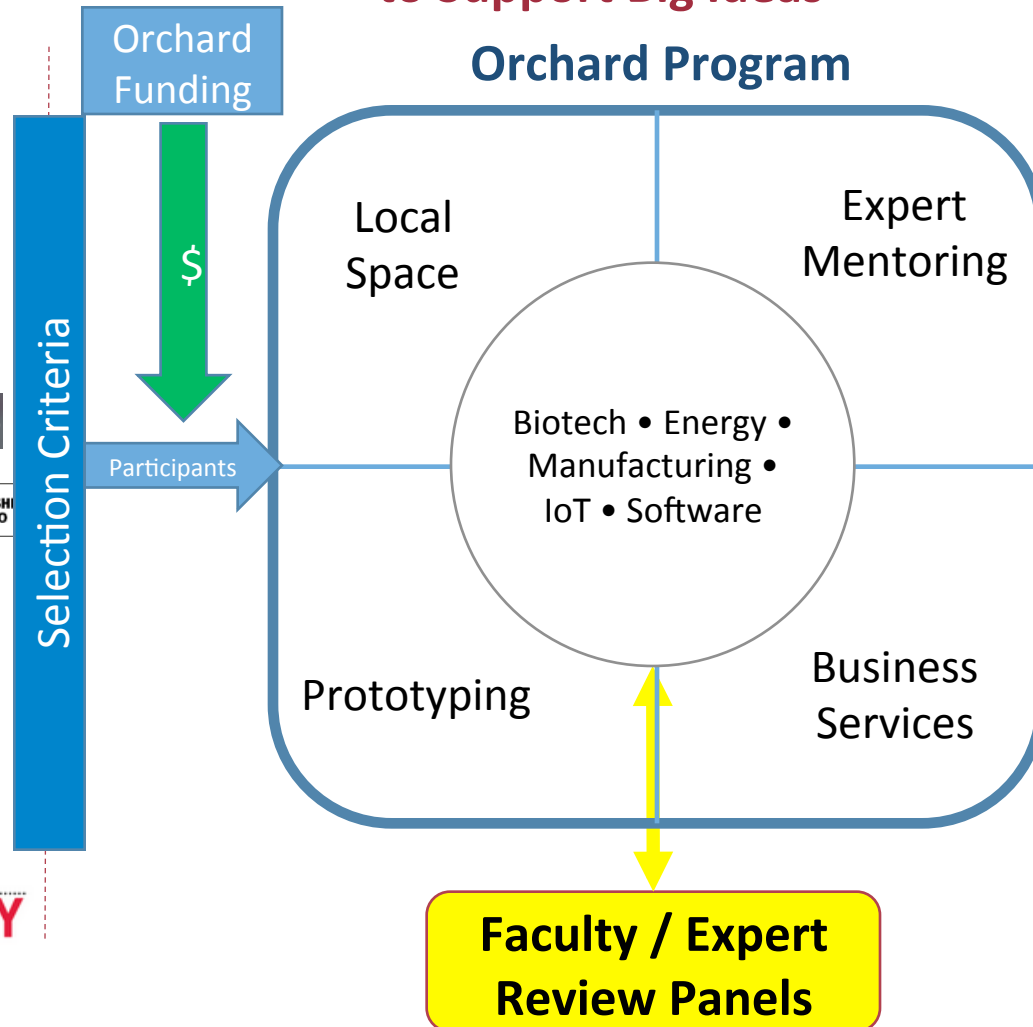


# Accelerating Breakthrough Innovations

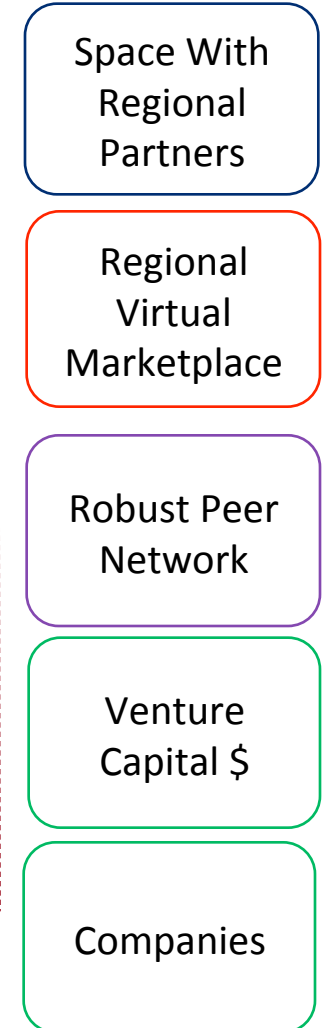
## Built on Existing Programs

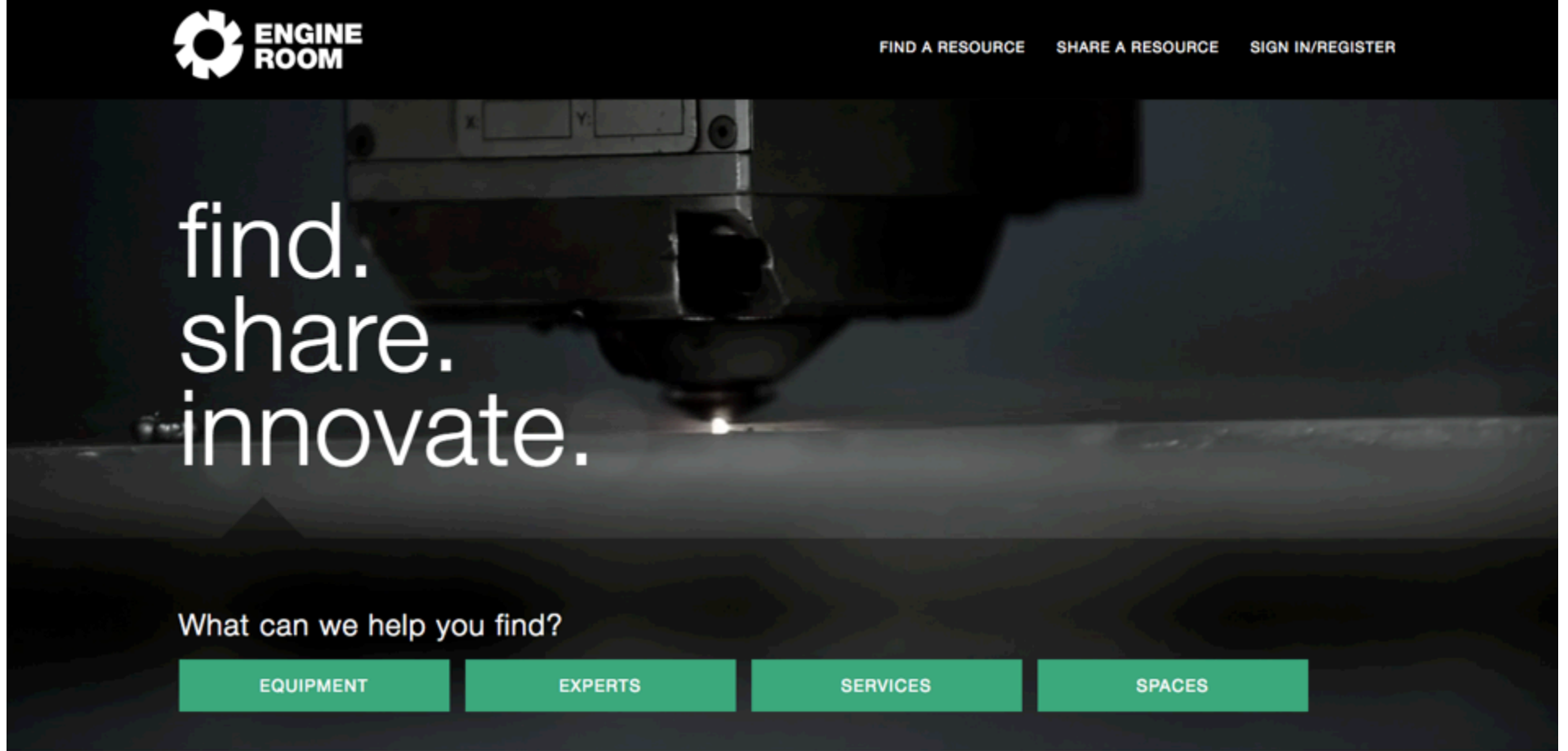


## Patient Capital & Resources to Support Big Ideas



## Connecting to a Robust Regional Ecosystem





find.  
share.  
innovate.

What can we help you find?

EQUIPMENT

EXPERTS

SERVICES

SPACES

## About Us

In the Engine Room, the brightest innovators will find the equipment, space, services and expertise needed to develop the biggest and most transformative ideas through to their most effective implementation.

LEARN MORE

# AREAS OF INVESTMENT INTEREST



Internet  
of things



Advanced  
Manufacturing



Bio



Energy



Materials



Robotics



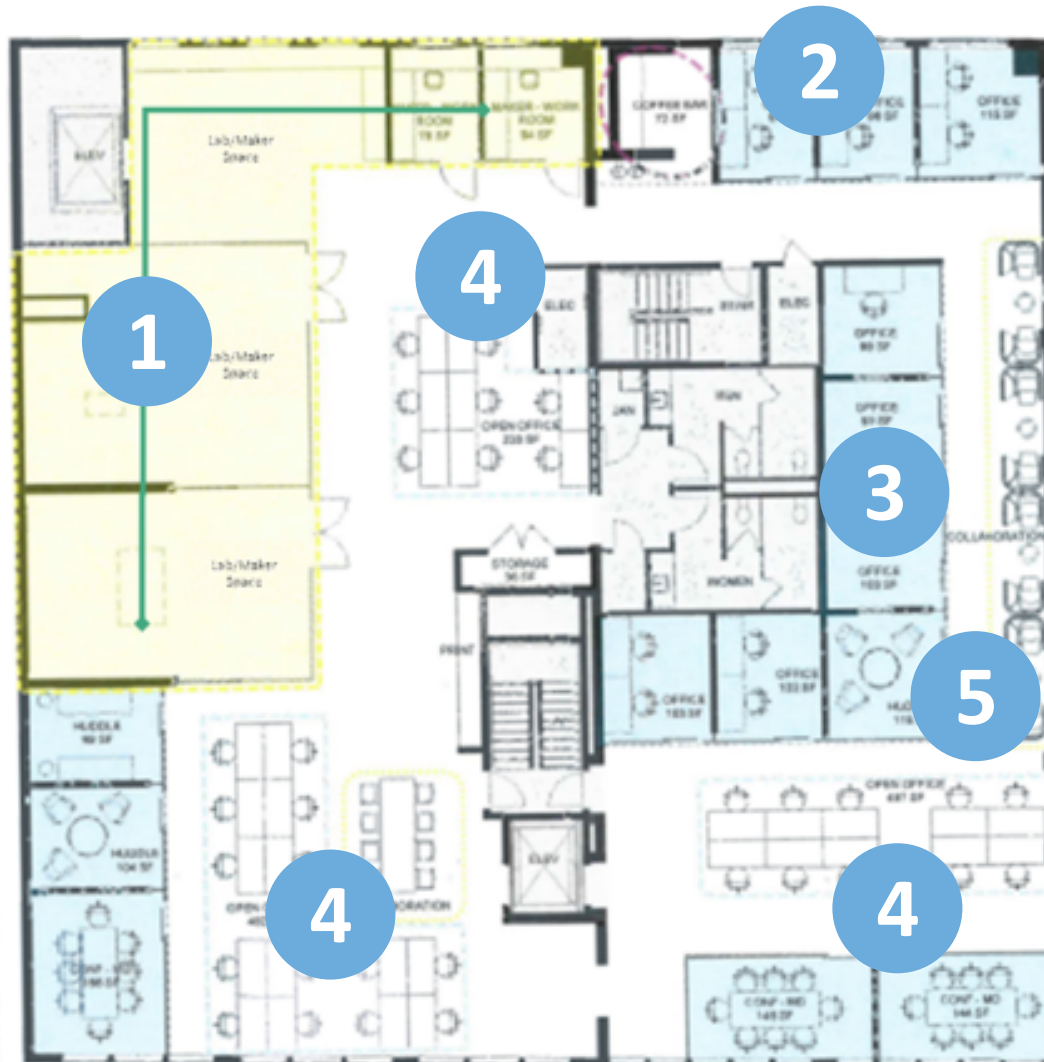
AI/VR



Deep  
Software




# THE ENGINE 501 MASS AVE



- 1.** Lab & maker space zone
- 2.** The Engine offices
- 3.** The Engine member private offices
- 4.** Mixed open office space/closed conference
- 5.** Open collaboration space

***26,000 Sq. Feet***



 FULL SCREEN

Katie Rae has been named The Engine's president and CEO and managing partner of its first investment fund.

Courtesy of Katie Rae

## The Engine names startup and investing veteran Katie Rae as president and CEO

MIT's new startup accelerator also announces its Board of Directors and Investment Advisory Committee.

Rob Matheson | MIT News Office  
February 13, 2017

▼ Press Inquiries

PRESS MENTIONS





FULL SCREEN

Members of The Engine's Board of Directors and Investment Advisory Committee at The Engine headquarters in Central Square (from left to right): Katie Rae, Robert Kraft, israel Ruiz, Anantha Chandrakasan, Linda Pizzuti Henry, Amir Nashat, Sue Siegel, David Fialkow, Jeremy Wertheimer, Brad Powell, Felipe Chico, and Jonathan Kraft.

Courtesy of The Engine

## The Engine closes its first fund for over \$150 million

MIT's new accelerator will now focus on selecting startups.

Rob Matheson | MIT News Office  
April 6, 2017

Press Inquiries

RELATED

# HOW CAN YOU GET INVOLVED?

- Founders apply: [www.engine.xyz](http://www.engine.xyz)
- Recommend promising startup
- Participate and contribute to The Engine programming and events
- Mentor startups
- Become a corporate member or community affiliate

## The Engine Working Groups effort at MIT

*Framing MIT policies and procedures related to The Engine.*

Provost Martin A. Schmidt  
Executive Vice President & Treasurer Israel Ruiz  
Vice President for Research Maria T. Zuber

The Engine Advisory Committee  
Prof. Anantha P. Chandrakasan (chair)

### *The Engine Working Groups*

Facilities Access  
Prof. Martin  
Culpepper (chair)

Technology  
Licensing  
Prof. Tim Swager  
(chair)

Conflict of  
Interest  
Prof. Klavs F. Jensen  
(chair)

Visas for  
Entrepreneurs  
Prof. Dick Yue  
(chair)

MIT's Innovation  
Ecosystem  
Prof. Fiona Murray &  
Prof. Vladimir Bulovic  
(co-chairs)